

LANDSCAPE



BRANDS CARRIED



p. 2-3
dewittcompany.com

Landscape
Accessories

p. 4
edging, deer fencing, etc.



p. 5
hortind.com



DeWitt operates out of a 350,000 square-foot facility which is centrally located in the heartland of America. By continually investing in state-of-the-art technology and equipment, DeWitt is able to consistently provide the highest quality products available in the lawn and garden industry. DeWitt products are used in more than 70% of the commercial landscaping done throughout the United States.

Landscape Fabrics - What You Need to Know

1: The fabric should be just strong enough to withstand the most vigorous stresses of application, but no more. **2:** The fabric should have a consistent distribution of fibers and a small enough opening size to keep weed/grass from coming up through the fabric. **3:** The fabric must be porous enough to allow water and air to pass freely to the soil.

Seed Guard (0.5 oz)

DeWitt Plant & Seed Guard is a lightweight, .5 oz., white, spunbond fabric for use in grass seeding in commercial and residential sites. It creates an excellent micro-environment for seed germination and seedling growth. This fabric provides a 90-95% average seed germination compared to 60-65% with straw or hay and can be used as a low cost insulation against the elements.



Available Sizes		
6ft x 250ft	12ft x 500ft	12ft x 1000ft



Deluxe Plus (1 oz)

This 1 oz. fabric protects vegetation from frost by raising temperatures beneath the fabric. In addition to providing protection against cold, wind, birds, insects and scorching sun, Deluxe Plus helps produce larger, earlier and more productive yields.

Available Sizes		
6ft x 1000ft	12ft x 1000ft	14ft x 500ft

Supreme (1.5 oz)

This 1.5 oz. fabric is ideal for protecting flowering annuals, bedding plants and vegetables from severe cold and freezing. Temperatures underneath the fabric are warmer than outside conditions. Want to lengthen your harvest time and extend your flowering season? Then use DeWitt's Supreme Crop Protection Fabric.



Available Sizes		
6ft x 500ft	12ft x 250ft	12ft x 500ft



Ultimate (2.5 oz)

This ultimate 2.5 oz. fabric provides freeze protection or greater plant protection during extreme conditions. DeWitt's Ultimate is the most durable, effective product available on the market for "all winter" protection of your perennials and other ornamentals. Designed to hold in heat and allow irrigation and rain to pass through, this fabric will not cause foliage burn even on sunny days.

Available Sizes		
6ft x 250ft	12ft x 250ft	15ft x 250ft



Dewitt Sunbelt Weed Barrier (Black)

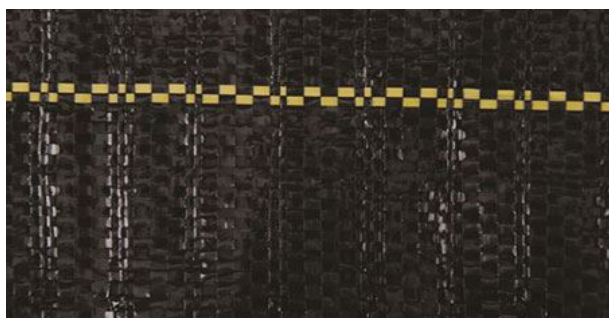
Our most popular ground cover product, Dewitt Company Sunbelt Weed Barrier is 3.2 oz per sq yard in an 11x21 weave. The fabric is made of black, high U.V. resistant polypropylene which is woven to allow both air and water to pass through, reducing standing water and root rot. 12” marker lines help with container alignment. The fabric can be used under gravel, soil, sand, or pine straw to hinder weed growth and reduce erosion. This product has continued to be the first choice for professional landscape installation and the most effective in preventing weed growth over a long term.



Characteristics:

- Blocks weeds and helps prevent erosion.
- Long lasting, high U.V. resistant polypropylene.
- 12” marker lines for easy container alignment.
- Water and air permeable and mildew resistant.
- Use under gravel, soil, sand or pine straw.

Item Number	Roll Size	Sq. Ft. / Roll	Weight
DWSBLT3300	3' x 300'	900	23
DWSBLT4300	4' x 300'	1200	29
DWSBLT6300	6' x 300'	1800	44
DWSBLT10300	10' x 300'	3000	75
DWSBLT12300	12' x 300'	3600	87
DWSBLT15.5300	15.5' x 300'	4500	112



- Sunbelt ground cover weed barrier
- UV stabilized and permeable to air and water and a low cost, ecology safe alternative to herbicide use
- Allows air and water to penetrate for worry-free irrigation
- Provides a 90 to 95 percent average seed germination compared to 60 to 65 percent with straw or hay
- Measures 300-foot length

Dewitt Sunbelt Weed Barrier (White)



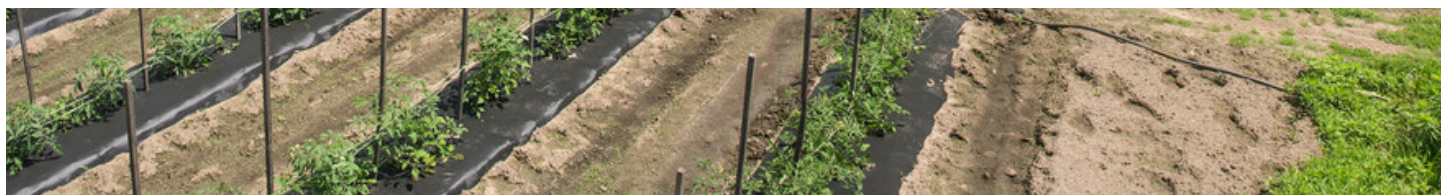
Item Number	Roll Size	Sq. Ft. / Roll	Weight
DWSBLTW3300	3' x 300'	900	23
DWSBLTW6300	6' x 300'	1800	44
DWSBLTW12300	12' x 300'	3600	87
DWSBLTW15300	15' x 300'	4500	112

Restrictor Landscape Fabric

Our Restrictor landscape fabric is a black woven needle-punched fabric. Restrictor provides excellent strength and toughness and has a very high UV resistance. It has a consistent opening size that prevents weed growth and allows water and air exchange with the soil.



Weight	Material	Tensile Strength	Elongation	Trap / Tear	Burst Strength
48 oz / sq. yd	Woven Needle Punched Polypropylene	110 / 100 lbs.	31 / 59%	57 / 55 lbs.	280 PSI





Steel Roll Top Edging

Steel Roll Top Edging comes in 4" x 10' strips. This edging has the top edge rolled at the factory to provide protection from the sharp edges. Steel Roll Top Edging is being speced on many jobs.

Our edging is available in 3 gauges including 18ga, 16ga and 14ga.

Code	Description
WLRTE	18 Gauge
WLRTE16	16 Gauge
WLRTE14	14 Gauge
WLRTEP	16 Gauge Preforated



Dewitt Deer Fencing

Dewitt Deer Fencing is an inexpensive polypropylene netting material that effectively stops deer from entering garden areas. 3/4" Mesh.

Available in two sizes.

Code	Size
DWDF7100	7' x 100' Deer Fencing
DWDF7100	7' x 350' Deer Fencing

Burlap

7.5 ounce underthread burlap for wrapping tree balls.

Item Number	Size
WLB3X300	3' x 300'
WLB4X300	4' x 300'
WLB5X300	5' x 300'
WLB6X300	6' x 300'

Erosion Control Mat

48" x 225' Biodegradable jute 1" square.

Item Number: **WLJ4X225**

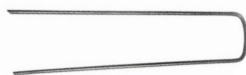


Ground Staples

A 5 1/2" inch U shaped nail to stabilize fabric to the ground.

6" Fabric Staples - 100 per box

Item Number: **WLFP**



Edging Staples

An 11 inch edging staple used to secure metal edging in place.

500 per box

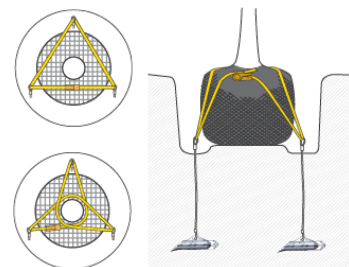
Item Number: **LAES**



Duckbill Total System

Saving time and labor, patented Duckbill earth anchors work like toggle bolts in soil. They are driven into the ground with no holes, no digging, and minimal soil disturbance creating a safe and environmentally sensitive installation. With an upward pull, the anchor tendon rotates the Duckbill into a perpendicular "anchor lock" position in undisturbed soil resulting in superior holding capacities.

Duckbills are manufactured from aluminum alloys



Individual Anchors

Model 40-DB1 - Item Number: FI140-DB1

300# rated capacity. Cabled with 20" of 1/16" galvanized steel cable. Anchor weight 1 oz. Standard pak-50/box.

Model 68-DB1 - Item Number: FI168-DB1

1,000# rated capacity. Cabled with 2 1/2' of 1/8" galvanized steel cable. Anchor weight 4.5 oz. Standard pak-24/box.

Model 88-DB1 - Item Number: FI188-DB1

3,000# rated capacity. Cabled with 3 1/2' of 1/4" galvanized steel cable. Anchor weight 14 oz. Standard pak-12/box.

Standard Drive Rods

For Model 40: DR-2 - 3/8" round 2' long steel hand drive rod with 1/4" tip and large striking head. Item Number: FIIDR2

For Model 68: DR-1 - 1/2" round 3' long steel hand drive rod with large striking head Item Number: FIIDR1

DR1 HD (Heavy Duty): 3/4" round 3' long steel hand drive rod with large striking head. Tip is turned down to 1/2". Power rod available on request

For Model 88: DR-3 - 3/4" round 4' long steel hand drive rod with large striking head. Item Number: FIIDR3



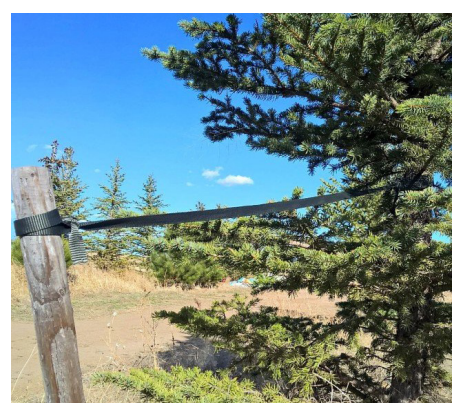
Hort Industries Ltd. offers high quality professional horticultural products to Greenhouse, Nursery, Distributor and Consumer Retailers throughout North America. Hort products are designed, assembled, packaged, and distributed at a low cost right here in the USA. Domestically sourced materials help secure American jobs while permitting much greater control over costs and production times.

Hort Straps

Tree Straps Made in America

- Higher Quality
- Better Value
- Stronger
- Stainless Steel Eyelets

Available in Sizes:



Hort Wraps

Tree Wrap Made in America

Protects Against:

- Sun Scald
- Windburn
- Severe Frost

Benefits:

- More Stretch
- Biodegradable Paper
- Better Value
- Stronger

Available in Sizes:

- 1.) 3" x 105' Roll
- 2.) 4" x 105' Roll

Hort Ties

Soft and Safe for Staking and Guying Trees - Made in America

- Replaces Traditional Wire and Hose
- Ideal for use with Hort Strap Tree Straps

Available in Sizes:

- 1.) 250' Spool
- 2.) 500' Spool

